

H H H H H
 n th ll th h, t nt hil l, nt n th h, t nt hil t i, h n
 h ng l t th n ing n t int t in hil n n hil h in th i l t l g n t th h, t nt

INSIDE THIS ISSUE

t nt ti n
 Molly Irwin and Ann Anderson

n g t hil h
 t i g
 o rse anno n e ents

n ti n n
 hil n n h, n
 li

e inar eries
 dates and details

i l h n?
 e say arewell to
 i ettersten

The Schubert Center's Child Policy Initiative



The Child Policy Initiative builds on Case's existing strengths, including an undergraduate minor in Childhood Studies and a casual, wide network of Case faculty members who are engaged in child-related research, from a wide range of disciplinary perspectives in the social sciences, medicine, nursing, dentistry, public health, law, and the humanities.

The overriding goal of the Child Policy Initiative is to develop a comprehensive, innovative program of multidisciplinary education, research, and communications focused on child policy. Specific objectives for each program component are:

EDUCATION Three new child policy courses were offered for the first time in the 2013-2014 academic year, and have now become permanent course offerings. Childhood Studies C ST 300, *Child Policy: An Introduction*, gives undergraduate students an overview of the policy-making process and introduces them to key child policy issues. Childhood Studies C ST 301, *Child Policy: A National and International Perspective*, gives students an in-depth understanding of the child policy-making process at the state and federal levels, and includes an experiential component through which they spend several days in Columbus or Washington, DC meeting with policy makers and seeing the process in action. Childhood Studies C ST 302, *Child Policy: A Practitioner's Perspective*, awards course credit to all Child Policy interns for experiential learning opportunities in community agencies involved in child policy issues. In addition, in order to broaden students' exposure to child policy, policy modules have been developed and included into existing courses related to children and childhood. These modules draw on the expertise of local child advocates and policy makers.



Undergraduate Child Studies Minor

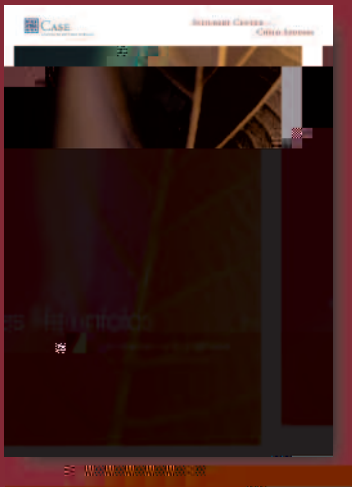


The Childhood Studies Minor, initiated in 2015, provides an educational opportunity for undergraduate students to pursue a wide array of interests related to children and the experience of childhood. The minor focuses on the life stages from infancy through adolescence, and also includes issues of parenting, gender, and the role of children in society and culture. As noted, the Schubert Center for Child Studies has developed three new child policy courses that are now permanent offerings in the undergraduate curriculum. Student experiences in two of those courses, C ST 101 and C ST 102, are shared here.

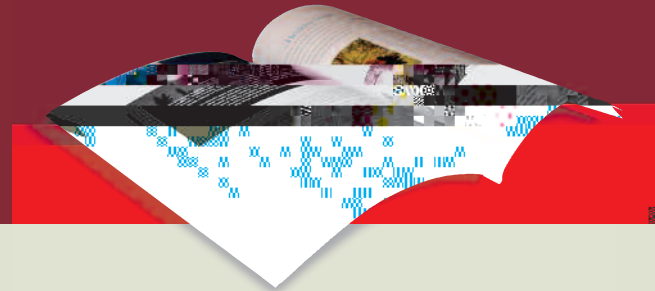
Childhood Studies Minor was offered for the first time in spring 2015. The first students enrolled in the class and learned more about how childhood is created at the federal level. The initial course was a trial to assess interest among students. It was successful, and the program was expanded to include a second course, C ST 102, in fall 2015. The program is now a permanent offering and the Schubert Center for Child Studies is proud to offer this minor to our students.

Students also had the opportunity to learn about the policy area in process through a series of seminars on child policy and research in the center. The seminars focused on child policy and research in the center. The seminars focused on child policy and research in the center. The seminars focused on child policy and research in the center.

The Schubert Center for Child Studies is proud to offer this minor to our students. The Schubert Center for Child Studies is proud to offer this minor to our students. The Schubert Center for Child Studies is proud to offer this minor to our students. The Schubert Center for Child Studies is proud to offer this minor to our students.



h h, t nt i, l t nn n th il, ilit it n , li tin As Life Unfolds



, h n nt g t n
 th i t t nt l t nn hil
 li .t n , i h .t n hj ith th
 nt nit l tin h h
 / n th hi l n tin
 . ign H . in . iti th t
 t . l ting h .t n hj n g ting
 h llti t . i
 tin t th nt nit l tin th
 . ign in t th hi l n
 tin . ign , h , n
 . t n th i . t n l n ,
 tin n it i . t n hil n in hi n
 , n g t, . nit l tin ,
 t , in . . = t l n
 , t th hi l n tin
 . ign n t th . li , i th t
 , h itt n n th . t
 , h thi t , th . in
 h h, t nt .t n hj ni
 . t nit th . i ith l l
 . in t n hi . i , li . l
 i g ni tin . g in g t n t n ,
 ing th . li . n l ting n
 t t. lti t l th . in l t .
 in , li . li .

H. H. I. I.
 in es rin in artners i wit a n ero o nity oli y
 a in or aniations t e ert enter as ro ided nder rad
 ate st dents ra ti al and son e erien e wor in wit ro essionals
 wo desi n and i le ent oli ies t at i a t t e li es o ildren
 and a ilies ro Mann ild oli y terns i s i
 l st dents a e een la ed wit lo al or aniations
 a tie in so ial oli y in t e areas o ild ealt ed ation law e
 nile sti e ental ealt and ild wel are were t ey a e t e
 o ort nity to a ly on e ts learned in t e lassroo to an or ani
 ational en iron ent e e terns i s also ro ide al a le ro es
 sional wor e erien e o date si st dents a e een la ed in sites
 in l din t e Allian e o ild arin er i e ro iders t e enter or
 o nity ol tions In est in ildren and oi es or ildren o
 reater le eland

Al ni si lin s l nn lora tone Mat er olle e and
 , t nn estern eser e olle e so al ed t eir e e
 rien es as nder rad ate st dents t at t ey a e eno sly ro ided
 s ort to today s nder rad ate st dents in e t e early ste
 Manns a e ro ided ndin t at allows st dents to en a e in i or
 tant and lie an in e erien es o side t e s al lassroo en i
 ron ent ro t eir enosity st dents a e tra eled t ro o t
 t e world to arti i ate in resear ro e ts on ildren e Manns
 rrently s ort t e Mann ild oli y terns i s as well as ot er
 e eriential learnin o ort nities s as t e rin rea tri
 to as in ton



thanks and farewell Rick Settersten

... in this ...
... in the ...
... in the ...
... in the ...
... in the ...
... in the ...
... in the ...
... in the ...

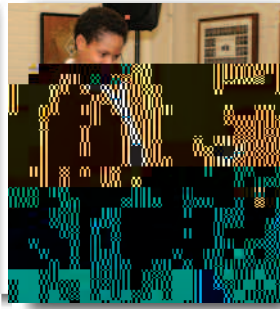
The Schubert Center's Child Policy Initiative

ESE ... research on children, ...
... is no available. This ...
... conducted across the Case ...
... Additionally, a series of ...
... Policy ... has been initiated. These ...
... ongoing child-related research ...
... Please consult the Schubert Center ...
... website, ... for information about the ...

NI TINS ... regular ... are convened by the Schubert ...
Center to stimulate an ongoing dialogue between ...
Case community and policy experts and advocates in ...
Ohio. In addition, a directory of Case ...
faculty with research expertise on children and ...
childhood has been published in ... and also on ...
the Schubert Center's website. This directory is part of ...
the continuing effort to broaden public access to university ...
resources and to better connect faculty who have ...
common interests.

The Child Policy Initiative is supported by funding from The ...
George ... Foundation and The Cleveland ... Foundation. Student ...
externships and other special educational experiences for students are ...
supported by endowment income designated for this purpose by the ...
annual endowment fund held by the Schubert Center, College of Arts ...
and Sciences.

... I IN ... H ...
... H ... H ...
... in ntl ... th ...
... hil li ...
... in ...
... in l ...
... nt ...
... nt ...
... hil h ...
... hil n ...
... nll ...
... nt ...
... t ...
... l ...
... l ...
... g ...
... l ...
... h ...
... l ...
... g ...
... H ...
... t ...
... in ...
... li ...
... NN ... S N ... H ...
... nn, ing lth hil ...
... l ...
... th ...
... h ...
... i ...
... t ...
... t ...
... ti ...
... g ...
... th ...
... t ...
... hil ...
... High ...
... n ...
... ni ...



H H H H E E T I N T S T S T E I D S A M I A I I I I A I
 I A A A A I M I I I I I I I I I I A I I I I I I I I I A I
 I M I I A A I A I I A I A A M A M M I I I I I I M
 A A A A I I I A I I A A I I A A I I A I I I I I I
 M A I A I A I A I I M I I A M I A A I A I I I I A A

Case Conversations on Children In Research and Policy

This continuing seminar series fosters interdisciplinary discussions and relationships among Case faculty, students, staff, and members of the wider community interested in children and childhood. The Schubert Center is off to a good start with this year's offerings. In September, Professor John Kennell and Susan McGrath spoke to a capacity audience about the history and success of doula-supported labor and delivery in the U.S., Kristen Brooks, a certified doula and nurse midwife also spoke about the policy implications of this important work.

In October, the Schubert Center co-hosted a panel discussion with the Center on Urban Poverty and Community Development that focused on November election issues affecting children and families. Over 100 students, staff, faculty, and community members joined in discussing issues including county health and human services funding, early care and education, primary school funding, and minimum wage and taxes. The panel was moderated by Amy Nichols Sanson, Executive Director of Voices for Children of Greater Cleveland. Panelists included Patricia Kenihan, Chief Executive Officer of the Cuyahoga County Community Mental Health Board, Lori McClung, Senior Fellow and Associate Director of Policy, Planning, and Programs for the Center for Community Solutions, Debra Schiller, Research Director of Policy Matters Ohio and Steve Steel, Director of Field Organization for the Ohio Fair Schools Campaign.

In November, Dr. Leslie Weinberg spoke to another capacity audience about the issues contributing to pediatric obesity and her experience with successful treatment plans. Ann Stahlheber, of Community Health Services of the Cuyahoga County Board of Health added a discussion about the policy issues involved and other programs occurring locally to address childhood obesity.



T S S in the ll g t n in t t n ni it t
 lti i j lin h n hil n n hil h g lit il n nh n nn tin ng h li
 n tin liniti ti tth ni it n ithth nit h h t nt i n hil n n hil
 h in n th gh l n in l l n tin l n int n tin l nt t

se inar series

SE N, E S T I N S N I D E N I N E S E N D I

th in tin , t thi i , l i it th h , t nt hil t i , it , , t i , h , t

l t h t th i
hn H > nn ll it i ti n >
th h h l gi t

hil n ith h i t i , l hi nt n h ll ng
i t i h h l g h
, t in ling t nt i t i n
h i t

l t n h t t t / > n l i i n th
l t i n i t i n g hil n n th
n ith th nt n , n t , nit
l nt
t i h ll n n . t i t i
hil n t l l n

H
ring ittl ng , h t n n t i g n
t nt n
i t t i n g h i t n t t nt
n i

ighting th i i n g i i t i , it
l i , H in , g h i t t nt
i i l g n i t t i

hil n H l th li
t i j nt t , nn n

ill or in Molly Irwin M I I I I A I ileen Anderson ye d A IA I on lea e
ntil all Ann Anderson M d A MI I A ayle annin enen a M A onald reed ei I
I san ll e rite ol tion I Mi elle M y e I



Schubert Center for Child Studies
614A Crawford Hall
10900 Euclid Avenue
Cleveland, OH 44106-7179

phone 216.368.0540
fax 216.368.1196
www.case.edu/artsci/schubert/
schubertcenter@case.edu